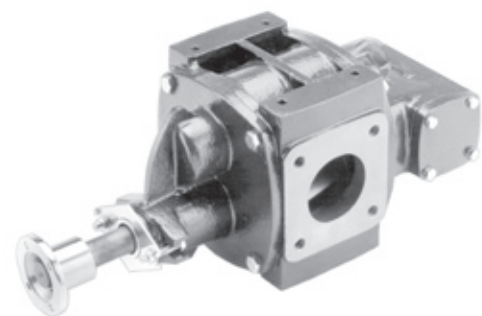


Storing, Mounting, Operating & Maintenance Manual

(Original Instructions)

DRUM

MERCURY 3 CARGO PUMP

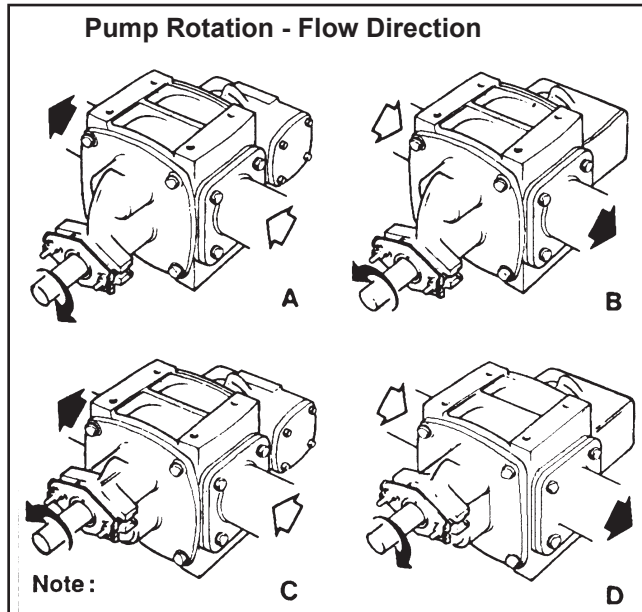


4997700003
September 2013

Storing, Mounting, Operating & Maintenance Instructions

The **Mercury 3** pump may be assembled to operate in either a clockwise or anticlockwise direction.

The drive rotation, direction of flow and the relief valve position are inter-related.



- 1 Standard build is a shown 'A', Suction Right Hand, clockwise rotation when looking on drive shaft end.
- 2 To reverse flow direction, turn pump upside down and maintain direction of rotation.
- 3 If anti-clockwise rotation is required, then end cover containing valve assembly must be turned through 180° and direction of flow will be opposite to that given in 1 and 2.

1 Storing

- a Store in a dry, heated building.
- b Handle carefully and keep the ports plugged to prevent entry of dirt.
- c Rotate the pump shaft daily to prevent the seals sticking.

2 Mounting

- a The pump has mounting feet, top and bottom, drilled and threaded M12.
- b The Mercury 3 pump is built with small clearances. Drum International Ltd. will not accept responsibility for any damage caused by foreign bodies entering the pump. A suitable filter should be fitted on the suction side of the pump.
- c Mount the pump with its shaft as near horizontal as possible.
- d The propshaft should be as short as possible and balanced. The angle of the propshaft must not exceed 12°.
- e The centre lines of the power take off and the pump shaft should be parallel.
- f When bolting pipework to the pump or reverse flow valve, take care not to distort the body by misalignment.
- g The reverse flow valve, if fitted, should be adequately supported.
- h The bore of the suction and delivery pipework should not be less than 80mm (3in.) Pipework length should be kept to a minimum.
- i The Mercury 3 is a high capacity pump. Should it be used on an articulated tanker, to ensure full output, it is recommended that it be mounted on the trailer portion to give good suction conditions.
- j Check with Drum International regarding the ratio of pump speed. Suitable power take off or hydraulic drive systems are available for most standard vehicles.
- k The relief valve setting is 5Kg/cm² (73 PSI.) Alternative spring settings are available.

The 2 stage relief valve is a standard fitting; pressure drops on full by pass; thereby reducing the hose pressure and the horsepower absorbed.

3 Operating

- a This pump is of internal bearing design and must not be used for corrosive or abrasive products.
- b Check with Drum International on products to be handled and for correct pump speeds.
- c Thoroughly flush out the pump under pressure after discharging any liquid likely to congeal. This will prevent damage to the pump when next starting up.
- d When handling viscous products using a Drum reverse flow valve; start with the valve in a neutral position and gradually increase the flow.
- e If the relief flow valve is used infrequently, rotate it daily to prevent stickig.

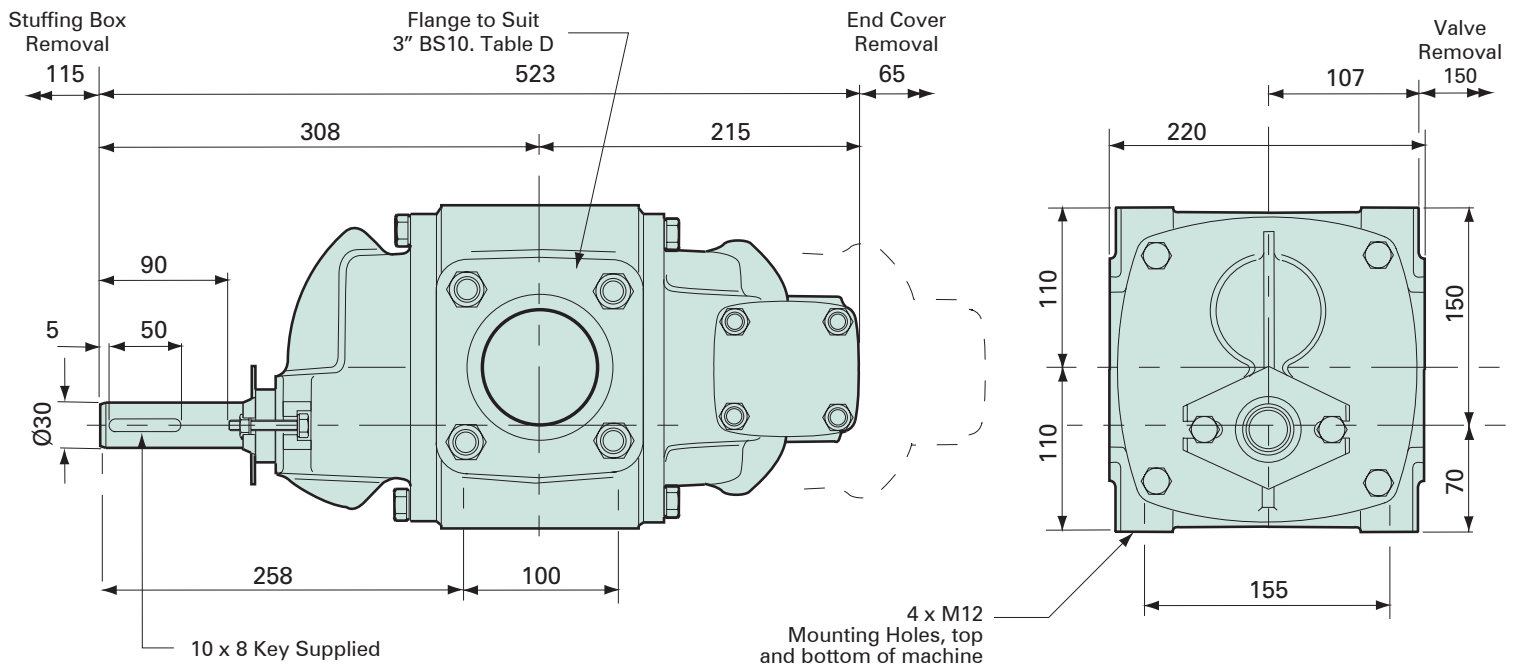
- f For optimum discharge rate, start with a slow drive speed and increase gradually until the pump attains maximum recommended speed dependant on the liquid viscosity.
- g To clear the pump lines, increase the pump speed just prior to the compartment becoming empty.
Do not do this after the pump starts to pull air. Do not run the pump at this elevated speed for more than 60 seconds.
- h **Do not run the pump dry.**
- i **Do not run the pump on full by-pass for more than 2 minutes.**
- j Should water enter the pump, a suitable lubricant, compatible with the product being dumped, should be flushed through to prevent rusting.

4 Maintenance

- a Check all pump and drive companion flange fastenings when carrying out any planned maintenance program.
- b Should the pump be out of service for long periods, rotate daily and flush, as in 3.10, monthly.
- c The bearings are lubricated by the product being pumped and require no further lubrication other than that described in 3.10.
- d For maintenance of the packed gland please see the leaflet - **Gland Packing Fitting Procedure** (4997600).
- e If the pump becomes noisy during normal operation, remove it from service immediately and investigate.

On No account should the machine be dismantled or partially dismantled during the warranty period

Dimensions



Weight Mercury 3: 51kg

All dimensions in mm.

Contact Us

Americas

Gardner Denver, Inc.
Industrial Products Group - Americas
1800 Gardner Expressway
Quincy, IL. 62305
Toll Free: 1-800-682-9868
Phone: 217-222-5400
Fax: 217-221-8780

email: mobilesolutions@gardnerdenver.com

France

Gardner Denver France SA
Division Compresseurs
42, rue du Montmurier, BP 604
38070 Saint-Quentin-Fallavier, France
Phone: +33 (0)474941673
Fax: +33 (0)474941689

email: contact.lyon@gardnerdenver.com

UK Sales & Service

Gardner Denver UK Ltd
PO Box 468
Cross Lane, Tong
Bradford, West Yorkshire
United Kingdom
BD4 0SU
Phone: +44 (0)1274 683131
Fax: +44 (0)1274 651006

email: sales.uk@gardnerdenver.com

Australia

Gardner Denver Ind. Australia Pty Ltd
30 Bearing Road
Seven Hills
New South Wales
2147 Australia
Phone: +61 2 96207000
Fax: +61 2 96207955

email: hermant.malik@gardnerdenver.com

Germany

Gardner Denver Deutschland GmbH
Am Dorn 14
48308 Senden
Germany
Phone: +49 (0)253634840
Fax: +49 (0)25363484010

email: info.de@gardnerdenver.com

Spain

Gardner Denver Iberica S.L.
Calle Primavera, 20
Poligono Industrial Las Monjas
28850 Torrejon de Ardoz
Madrid, Spain
Phone: +34 (0)916560056
Fax: +34 (0)916770496

email: aurelio.fernandez@gardnerdenver.com

Belgium

Gardner Denver Belgium N.V.
Luithagen 7A
Haven 200
B-2030 Antwerpen
Belgium
Phone: +32 (0)3 5415040
Fax: +32 (0)3 5416509

email: info.be@gardnerdenver.com

Netherlands

Gardner Denver Nederland BV
Barwoutswaarder 3B
3449 He Woerden
The Netherlands
Phone: +31 (0)348410150
Fax: +31 (0)348418079

email: sales.nl@gardnerdenver.com

Rest of the World

Gardner Denver Ltd
PO Box 178
Springmill Street
Bradford, West Yorkshire
United Kingdom
BD5 7YH
Phone: +44 (0)1274 718100
Fax: +44 (0)1274 655272

email: gdtransportsales@gardnerdenver.com

For additional information, contact your local representative or

The logo for Gardner Denver, featuring the word "Gardner" in a large, bold, black sans-serif font above the word "Denver" in a similar font. A thick red horizontal line is positioned between the two words.

Gardner Denver Ltd
PO Box 178,
Springmill Street,
Bradford,
West Yorkshire, UK
BD5 7YH

Tel: +44 (0)1274 718100

Fax: +44 (0)1274 655272

Email: gdtransportsales@gardnerdenver.com

Web: www.gd-transport.com