

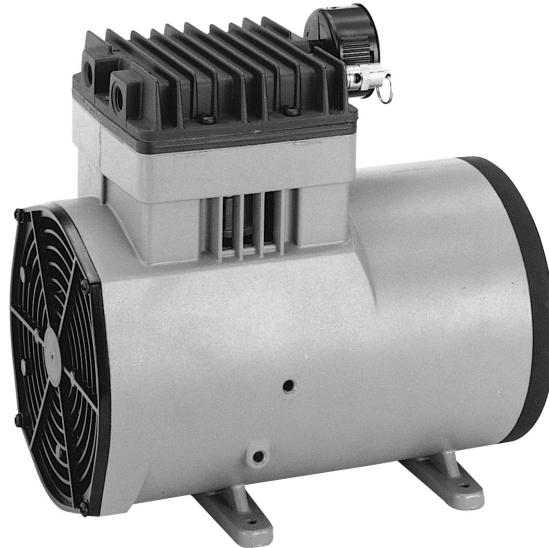


1207 SERIES

MODELS

1207PHI80

1207PK80



FEATURES

- Oil-less, non-lube piston and cylinder
- Permanently lubricated bearings
- Stainless steel valves
- Aluminum valve plates
- Lightweight die cast aluminum components
- Long-life, high performance PTFE compound piston seal
- Thin wall, hard-coated aluminum cylinder for maximum heat transfer
- Air-over-motor for maximum cooling of motor, bearings and cylinder head
- Low noise design
- Balanced for smooth, low vibration operation
- Six foot electrical cord
- Field service capability
- All wetted aluminum parts treated for corrosion protection from moisture
- All other wetted parts stainless steel
- 115 volt, UL recognized motor and thermal protector
- Pressure restart capability
- Relief valve
- Intake filter

Consult factory for custom applications

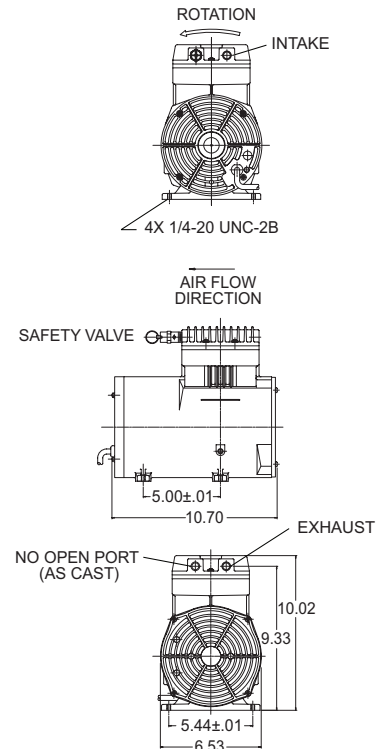
Thomas Division is an ISO 9001 registered company

THOMAS
A Gardner Denver Product

1207 Series Performance Data

1207P

MODEL NUMBER		1207PHI80		1207PK80	
HEAD CONFIGURATION		Pressure/Vacuum		Pressure/Vacuum	
STROKE		.800 Inches		.800 Inches	
PRESSURE		Flow @ 240v		Flow @ 115v	
CFM @ PSI	LPM @ bar				
PSI	bar	CFM	LPM	CFM	LPM
0	0	3.12	88.3	3.78	107.0
5	.5	2.98	80.4	3.72	104.6
10	1.0	2.86	77.0	3.66	100.8
15	1.5	2.75	75.9	3.55	96.2
20	2.0	2.64	70.6	3.43	92.3
25	3.0	2.57	65.1	3.34	84.6
30	5.0	2.50	52.4	3.24	69.4
35	7.0	2.42	42.0	3.14	55.6
40		2.35		3.04	
50		2.23		2.89	
60		2.02		2.69	
70		1.82		2.49	
80		1.76		2.33	
90		1.63		2.14	
100		1.48		1.99	
110		1.33		1.82	
120		1.23		1.62	
MAX. CONTINUOUS PRESSURE		125 PSI	8.6 bar	125 PSI	8.6 bar
MAX. INTERMITTENT PRESSURE		125 PSI	8.6 bar	125 PSI	8.6 bar
VACUUM		Flow @ 240v		Flow @ 115v	
CFM @ IN. hg	LPM @ mbar (gauge)				
IN. hg	mbar (gauge)	CFM	LPM	CFM	LPM
0	0	2.46	88.3	3.78	107.0
5	-100	2.27	72.0	2.60	87.3
10	-200	1.69	58.1	1.98	70.4
15	-400	1.08	40.5	1.30	49.1
20	-600	.47	22.8	.70	27.6
25	-800		6.2	.10	7.5
MAX. VACUUM		23.7" hg	-803 mbar	25.9" hg	-878 mbar
MAX. AMBIENT AIR TEMP.		104° F	40°C	104° F	40°C
MIN. AMBIENT START TEMP.		50° F	10°C	50° F	10°C
MAX. RESTART PRESSURE		120 PSI	8.3 bar	120 PSI	8.3 bar
MAX. RESTART VACUUM		0"hg	0 mbar	0"hg	0 mbar
MOTOR VOLTAGE/FREQUENCY		220-240/50/1		115/60/1	
MOTOR TYPE		Permanent Split Capacitor		Capacitor Start	
CURRENT AT RATED LOAD (AMPS)		3.5		10.6	
POWER AT RATED LOAD (WATTS)		658		800	
STARTING CURRENT (LOCKED ROTOR, AMPS)		9.8		38.5	
CAPACITOR VALUE		15 mfd		189/227 mfd	
MIN. FULL LOAD SPEED (RPM)		1400		1700	
THERMAL PROTECTOR		Yes		Yes	
NET WEIGHT		26 lbs.	11.8 kg	26 lbs.	11.8 kg



The information presented in this material is based on technical data and test results of nominal units. It is believed to be accurate and reliable and is offered as an aid to help in the selection of Thomas products. It is the responsibility of the user to determine the suitability of the product for his intended use and the user assumes all risk and liability whatsoever in connection therewith. Thomas Industries does not warrant, guarantee or assume any obligation or liability in connection with this information.

NOTE: Models pictured are representative of the series and do not represent a specific model number. Consult factory for detailed physical description.

THOMAS
A Gardner Denver Product

Thomas Division
1419 Illinois Ave
Sheboygan, WI 53081 USA
Phone: (920) 457-4891
Fax: (920) 451-4276
www.gd-thomas.com